



Made for ideas.

## FUEL USER MANUAL



CLICK [HERE](#) TO ACCESS AN **UP-TO-DATE ONLINE VERSION**

of this document. You will find the most recent content as well as expandable illustrations, easier navigation, and search capability.



# INTRODUCTION

Congratulations on your purchase of a LaCie Fuel mobile wireless storage device. This device contains a portable hard drive that broadcasts a wireless signal. You can store your digital media on the device and then stream content to an iPad®, iPhone®, iPod® touch, Android™ tablet or smartphone, or other Wi-Fi enabled tablet, smartphone, or computer.



This manual provides instructions on how to use the LaCie Fuel with your devices and will assist you in troubleshooting any issues that might arise. If you encounter problems, check [Getting Help](#).

## LACIE FUEL FEATURES

Here's a list of some of the things you can do with your LaCie Fuel:

- **Store your movies, songs, photos, and documents.** A 1TB hard drive can store over 300 high-definition (HD) movies (1.5GB MP4 H.264), 125,000 songs, or 100,000 photos.<sup>1</sup>
- **Load your media quickly.** Your LaCie Fuel includes a USB 3.0 port for fast transfers, up to 5Gb/s. To take advantage of the faster transfer rates available to USB 3.0, plug your device into a Windows® or Mac® computer with a USB 3.0 port. The LaCie Fuel can be connected to a USB 2.0 port but transfer rates will be slower, up to 480Mb/s.
- **Share content with more people.** Your LaCie device can stream up to three or more Wi-Fi enabled devices at the same time, so more than one person can access your wireless media library at the same time.
- **Enjoy up to 8 hours of continuous play.** Your LaCie Fuel provides up to 8 hours of continuous video streaming.<sup>2</sup>
- **Do more.** While you're listening to music or viewing movies or photos on your mobile device, you can also browse the internet from your home network or your favorite Wi-Fi hotspot.
- **Manage your digital media files.** Use the LaCie Media™ app to play your music in the background, personalize your photo slide shows, add movie bookmarks, and more.
- **Synchronize your media files.** Automatically synchronize all your media files with your LaCie Fuel using the free Seagate Media Sync™ software.

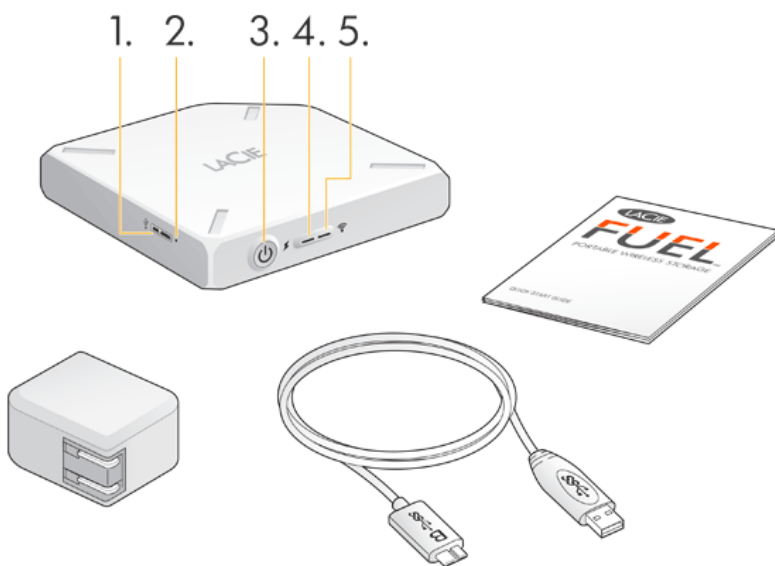
# GETTING TO KNOW LACIE FUEL

This section identifies the different parts that make up your LaCie Fuel and provides information to help you keep your device charged and ready.

## BOX CONTENTS

- LaCie Fuel mobile wireless storage device
- USB 3.0 cable and power adapter
- Quick Install Guide

## PRODUCT VIEW



1. **USB port**
2. **Factory reset button:** A recessed button next to the USB 3.0 port on the side of the device. Press and release this button to reset your LaCie Fuel to its original factory settings. No data is lost during this process.
3. **Power button:** Press to turn on the LaCie Fuel. Press again to turn it off.
4. **Power LED:**
  - Green solid: Fully charged.
  - Amber: Charging.
  - Red: Battery is low; requires a charge (see [Charging the Battery](#)).
5. **Wi-Fi LED:** Indicates the LaCie Fuel's wireless broadcasting state.
  - Blue blink: LaCie Fuel is starting up.
  - Blue solid: LaCie Fuel is Wi-Fi ready.
  - White: The device is connected to a computer via USB and is not Wi-Fi ready.

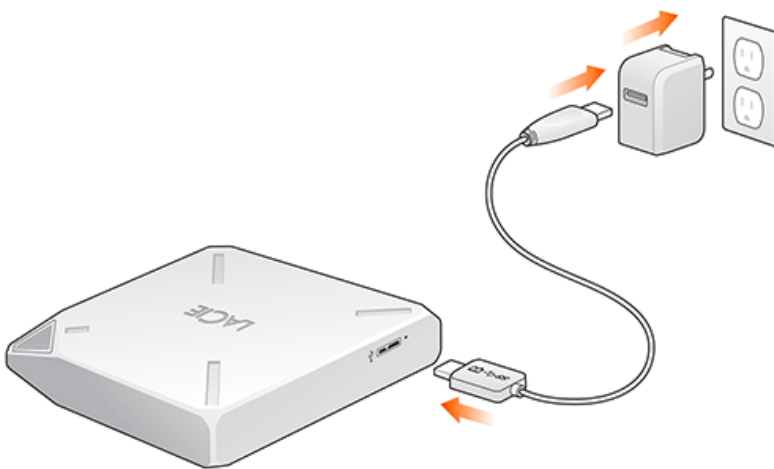
## CHARGING THE BATTERY

The LaCie Fuel uses a rechargeable lithium-ion battery. A fully charged battery provides up to 8 hours of continuous streaming. However, the battery loses its charge faster when playing high-resolution videos. When the device is in standby mode, the battery holds its charge for up to 25 hours. The device enters standby mode after 5 minutes of inactivity.

The power LED shows the battery status:

- Green: Fully charged
- Amber: Charging
- Red: Low battery, with about 5-10 minutes of battery life.

The fastest way to charge the battery is to connect your LaCie Fuel to a power outlet using the included USB cable and power adapter. It takes about 4 hours to fully charge the battery.



Your LaCie Fuel device also charges when it is connected to a computer, but at a slower rate. The lifespan of the battery is affected by the number of charge cycles. You cannot replace the battery.

**Important info:** The lithium-ion battery inside your LaCie Fuel device is not user-replaceable. Removing the battery will void the warranty for your product. Additionally, if you choose to remove the battery, you must dispose of it according to the laws of your country and region.

# SUPPORTED DEVICES AND OPERATING SYSTEMS

You can use your LaCie Fuel with these devices:

- iPad, iPhone, or iPod touch running iOS 5.1 or later
- Tablets and smartphones running Android 2.3 or later
- Windows computer running Windows 8, Windows 7, or Windows Vista®
- Mac® computer running Mac OS® X 10.6 or later

Linux operating systems are not supported. However, if your Linux operating system has appropriate browser support, media player capability, and wireless connectivity, it should be able to connect to your LaCie Fuel storage device.

**Important info regarding Linux:** If you connect your device via a USB cable, the device might go to sleep and cause errors if the Linux operating system does not wait for the device to wake up. No tool is available to disable the Linux sleep feature.

## Supported web browsers

You can use these browsers to access your media library on your LaCie Fuel device:

- Safari® 5 or later
- WebKit
- Internet Explorer® 9 or later
- Firefox®
- Google Chrome™

## Supported media formats

Your mobile device supports different media formats. If you cannot play a video that is saved on LaCie Fuel while wirelessly connected to your mobile device, the resolution might be too high or your mobile device does not support the video format.

### High-resolution files

If the video is a 1080i or 1080p file, it might require too much bandwidth and cause a choppy viewing experience or not play at all. Purchase a lower-quality video or use a program to change the file to a lower quality.

### Supported codecs

Confirm that your mobile device supports the video type or codec. Some third-party programs, such as VLC display information about the file and its codec.

## Supported media formats

- iOS: Review supported media formats at the [iOS developer website](#).
- Android: Review supported media formats at the [Android developer website](#).

## Hardware specifications

- USB 3.0 cable (required for USB 3.0 transfer speeds). Compatible with USB 2.0 ports.
- Battery: Nonuser-replaceable lithium-ion battery
- Battery life: Up to 10 hours of continuous streaming (1 user); up to 30 hours standby
- Maximum Wi-Fi range: 45 meters (147 feet)
- Drive format: exFAT

## ABOUT LACIE FUEL WI-FI SECURITY

Because your LaCie Fuel device is a wireless broadcasting device, it can be “seen” by any Wi-Fi device within its range (up to 45 meters or 147 feet). You can set a password to restrict access to your LaCie Fuel (see the [LaCie Media App user manual](#) for instructions).

**Note:** When your LaCie Fuel device is physically connected to your computer, the wireless capabilities are disabled, and your files are not visible to others.

# CONNECTING YOUR DEVICE

Your LaCie Fuel has its own wireless network. When you connect to the LaCie Fuel network from a mobile device or wireless computer, your mobile device establishes a dedicated Wi-Fi link with LaCie Fuel. You can also connect to the internet (concurrent mode) while connected to the LaCie Fuel.

## OPERATING SYSTEM

Choose your operating system for instructions:

Windows computer

1. Enable the wireless connection on the computer.
2. Power on the LaCie Fuel and wait for the LED to become solid blue.
3. Select **LaCie Fuel** from the list of available wireless networks.
4. To connect to the LaCie Fuel home page, open a web browser and enter to **www.laciefuel.com**.

To connect LaCie Fuel and your computer to the internet, see [Connecting LaCie Fuel to the internet](#).

Mac computer using AirPort®

If your Mac computer has an AirPort card, you can use it to connect to the LaCie Fuel. See your computer documentation for the most up-to-date instructions on connecting to a wireless network.

**Warning:** Do not allow Time Machine® to use your LaCie Fuel for backup.

1. Power on the LaCie Fuel and wait for the LED to become solid blue.
2. Click the Apple menu icon and select **System Preferences**.
3. Under **Internet & Wireless**, select **Network**.
4. Select **AirPort** from the list of network connection services.
5. Select **LaCie Fuel** from the list of networks.
6. Open a web browser and enter **www.laciefuel.com**.
7. To connect the LaCie Fuel and your Mac to the internet, see [Connecting LaCie Fuel to the internet](#).

Apple mobile device (iOS 5.1 and higher)

1. Power on the LaCie Fuel and wait for the LED to become solid blue.
2. On your Apple mobile device, tap **Settings** and then tap **Wi-Fi**.
3. Select **LaCie Fuel** from the list of networks.
4. To connect the LaCie Fuel and your mobile device to the internet, see [Connecting LaCie Fuel to the internet](#).

Android mobile device

1. Power on the LaCie Fuel and wait for the LED to become solid blue.
2. On your Android mobile device, tap **Settings**.
3. Under **WIRELESS & NETWORKS**, tap **Wi-Fi**.
4. Select **LaCie Fuel** from the list of networks.
5. To connect the LaCie Fuel and your mobile device to the internet, see [Connecting LaCie Fuel to the internet](#).



## CONNECTING LACIE FUEL TO A WI-FI NETWORK

You can connect your mobile device to the internet while connected to the LaCie Fuel. This process is called concurrent mode. See the [LaCie Media App user manual](#) for details.

# COPYING CONTENT

You can copy content to and from your LaCie Fuel while connected to your computer via USB or Wi-Fi. If you are copying a large quantity of content, it is recommended to connect LaCie Fuel to your computer with the provided USB 3.0 cable for the fastest copy speeds.

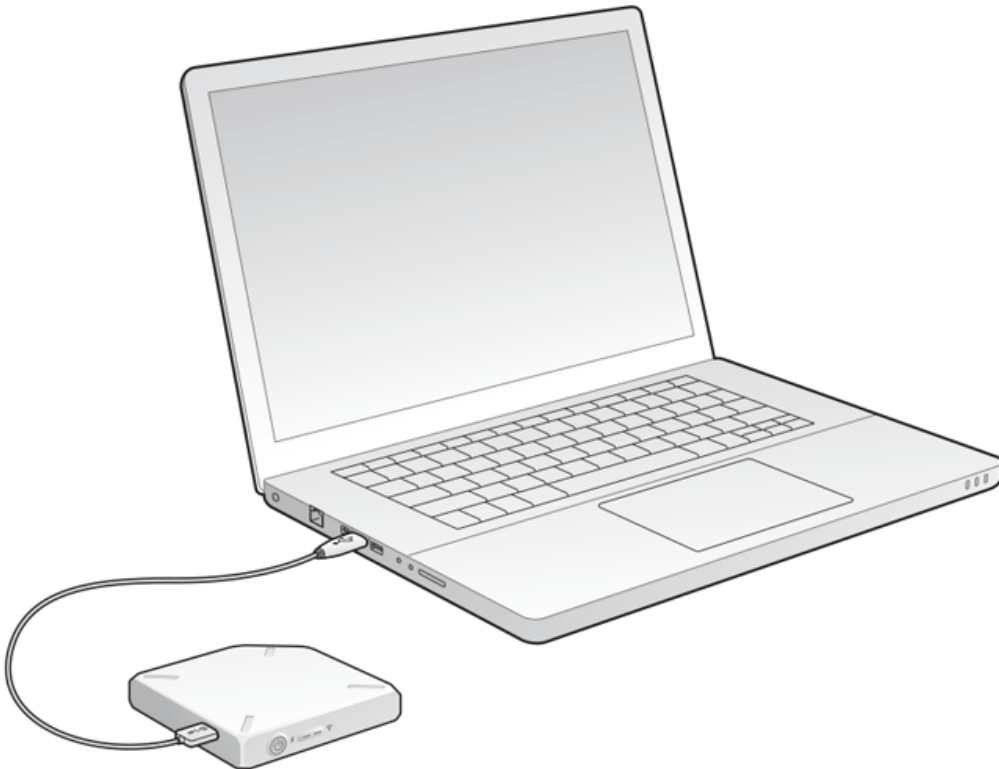
To learn how to wirelessly connect your mobile device or computer to LaCie Fuel, see [Connecting Your Device](#).

**Important info on licensed media:** It is your responsibility to comply with applicable copyright laws and to respect owner's rights in content usage.

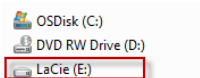
**Technical note:** Your mobile device can only play files in the formats that it supports. See your device's specifications for more information.

## CONNECTING THE LACIE FUEL TO YOUR COMPUTER

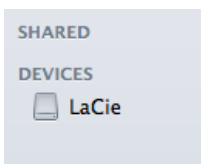
1. Power on LaCie Fuel.
2. Connect the provided USB 3.0 cable to your LaCie device and the USB 3.0 port on your computer.



3. Locate the LaCie storage device on your computer:
  - Windows 8 users: Press the Windows key+D, then select **File Explorer**.
  - Windows Vista and 7 users: Go to the Start menu and click **Computer**.



- Windows XP users: Go to the Start menu and click **My Computer**.
- Mac users: Open a Finder window and look under **DEVICES**.



**Important info for Mac users:** Do not allow Time Machine to use your device for backups.

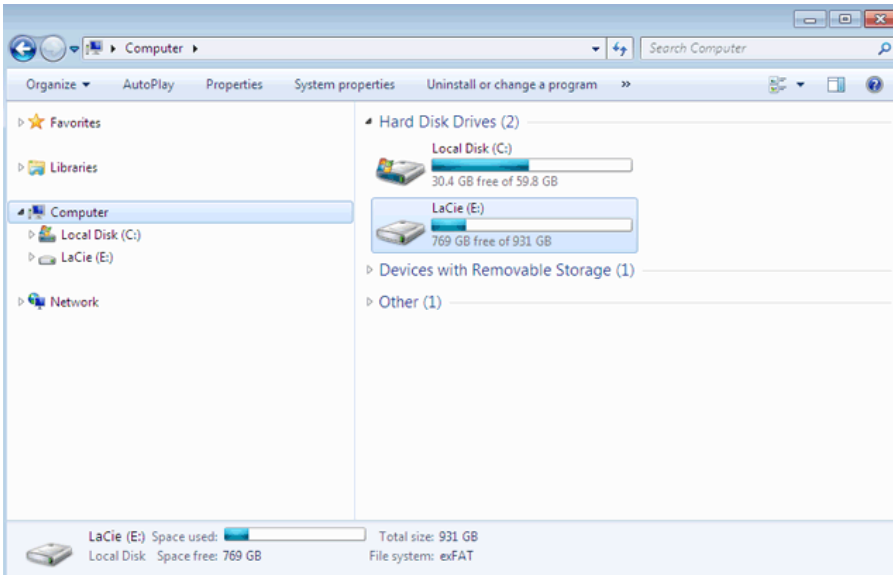
**Technical info on Wi-Fi:** When you physically connect LaCie Fuel to your computer, its Wi-Fi network automatically stops broadcasting.

# DRAGGING AND DROPPING CONTENT TO LACIE FUEL

You can copy data from your computer to LaCie Fuel in different ways. One of the easiest methods is to drag and drop the files.

Windows

1. Open a Windows Explorer folder.



2. Double-click the LaCie drive.
3. Browse your computer for the files that you want to copy to LaCie Fuel.
4. Press the Shift key to select multiple folders or files.
5. Drag the folders or files to the LaCie drive. The LaCie Fuel organizes and indexes files by type (e.g. videos, music, photos, etc.).
6. When the copy process is complete, safely eject LaCie Fuel from your computer (see [Eject the hard drive](#)).

You can connect your mobile device or computer to LaCie Fuel via its wireless network.

**Note on time to copy:** This process can take some time if you are copying a lot of content.

Mac

1. Locate the LaCie Fuel icon on your desktop or in a Finder window.
2. Browse your computer for the files you want to copy to LaCie Fuel.
3. Press the Shift key to select multiple folders or files.
4. Drag the folders or files to the LaCie drive. The LaCie Fuel organizes and indexes files by type (e.g. videos, music, photos, etc.).
5. When the copy process is complete, safely eject LaCie Fuel from your computer (see [Eject the hard drive](#)).

You can connect your mobile device or computer to LaCie Fuel via its wireless network.

**Note on time to copy:** This process can take some time if you are copying a lot of content.

## WIRELESSLY UPLOADING CONTENT TO LACIE FUEL

The easiest way to upload content from your mobile device is with the LaCie Media app.

The following instructions assume that you are wirelessly connected to LaCie Fuel. If you are not connected, see [Connecting Your Device](#).

If you have not installed the LaCie Media app on your mobile device, go to your app store and download the app.

### Uploading from a mobile device with LaCie Media

See the [LaCie Media App user manual](#) for instructions.

## Uploading from your computer

1. Wirelessly connect your computer to LaCie Fuel.
2. Select LaCie Fuel:
  - Mac users: Select **Go > Connect to Server**. In the Server Address field, type **cifs://172.25.0.1**. Select **Guest** and choose **Connect**. Your LaCie Fuel is now mapped to your computer.
  - Windows users: Open an Explorer window. In the folder field, type **\\172.25.0.1\Public**. Your LaCie Fuel is now mapped to your computer.
3. Drag and drop files from your computer to your storage device.

## WIRELESSLY DOWNLOADING CONTENT FROM LACIE FUEL

You can wirelessly save content from LaCie Fuel to your mobile device or computer.

### Wirelessly downloading to mobile devices

See the [LaCie Media App user manual](#) for instructions.



## Wirelessly downloading to your computer

Connect your computer to LaCie Fuel's Wi-Fi network or connect in concurrent mode. For more information, see [Connecting Your Device](#).

1. In a web browser, enter the IP address: 172.25.0.1.
2. The Videos view displays in your web browser.
3. Select the view that you want to download content from. For example, Videos or Photos.

4. 

In the upper right corner, select the checkmark icon (  ).

5. Select the items that you want to download. A check mark appears on each item that you select.



To select all files in the view, tap the icon with double boxes and check marks on the upper left (  ).



To remove all selections, tap the icon with double boxes on the upper left (  ).

6.  

To download the files, select the send to icon (  ) and then choose the download icon (  ).

# COPYING AND SYNCHRONIZING YOUR FILES WITH SEAGATE MEDIA SYNC

When you make changes to the media files on your computer, you can have them automatically synchronized on LaCie Fuel with the Seagate Media Sync app.

## Installing Seagate Media Sync

1. In a web browser, go to [www.seagate.com](http://www.seagate.com). In the Search field, type **media sync**.
2. Select a link to install the software on your computer.
3. Complete the installation instructions.

## Copying and synchronizing files on Windows

1. Connect the USB 3.0 cable to the LaCie Fuel and to your computer.
2. Launch Seagate Media Sync. Make sure that the LaCie Fuel drive appears in the My Devices window.
3. Click the **Sync Now** icon for the LaCie Fuel.
4. Choose a synchronization plan.
  - Simple iPad Sync: Automatically synchronizes media files that an iPad can play or view. To make changes to the sync plan, select **Edit Sync Settings** on the Media Sync screen.
  - Simple Sync: Automatically synchronizes your computer's media folders with an external drive. To make changes to the sync plan, select **Edit Sync Settings** on the Media Sync screen.
  - Custom Sync: Allows you to manually select the folders and media types to synchronize between your computer and an external drive.
5. Select the folders on your computer to be synchronized with the external drive.
6. Click **Next** to go to the File Types window.
7. To sync only the files that can be opened on specific Apple or Android devices, click the menu below **Sync files for** and choose the devices from the list. To sync all files that are identified as movies, music, or images with any device, select all digital devices. The file types change based on the device you choose.
8. Select one or more of the media type boxes to filter what is synchronized.
9. Click Finish.
10. When the sync is complete, safely eject LaCie Fuel from your computer (see [Eject the hard drive](#)).

**Note on Automatic Sync:** Automatic Sync continuously tracks file changes in synchronized folders and automatically synchronizes revised versions by overwriting older versions with newer versions. Automatic Sync can occur only when your external drive is connected.

## Copying and synchronizing files on a Mac

1. Connect the USB 3.0 cable to the LaCie Fuel and to your computer.
2. Launch Seagate Media Sync. Make sure that the device appears in the left panel of the Seagate Media Sync window. If more than one device is connected to your computer, select the appropriate device for synchronization. Each device has its own settings.
3. In the right panel of the application window, select a sync plan.
  - Simple iPad Sync: Automatically synchronizes media files that an iPad can play or view. To make changes to the sync plan, select **Edit Sync Settings** on the Media Sync screen.
  - Simple Sync: Automatically synchronizes your computer's media folders with an external drive. To make changes to the sync plan, select **Edit Sync Settings** on the Media Sync screen.
  - Custom Sync: Allows you to manually select the folders and media types to synchronize between your computer and an external drive.
4. Select **Include my Movies, Music and Pictures** folder to use your Mac's default media folders as the source folders.
5. To include other files and folders from your computer, click the + button and then navigate to the source media folders.
6. To sync files that are specific to Apple devices, choose the device from the **Sync files for:** list.
7. To filter what is synchronized, select what you want to synchronize under **Include**.
8. Click **Sync Now** or select **Automatic Sync** if you want to automatically synchronize media when your computer is connected to LaCie Fuel.
9. When the sync is complete, safely eject LaCie Fuel from your computer (see [Eject the hard drive](#)).

**Note on Automatic Sync:** Automatic Sync continuously tracks file changes in synchronized folders and automatically synchronizes revised versions by overwriting older versions with newer versions. Automatic Sync can occur only when your external drive is connected.

## Using Media Sync to manage your connected drives

You can use the Seagate Media Sync application with any NTFS, exFAT, or FAT32 formatted drive. Drives can be connected using USB, FireWire, and eSATA interfaces.

**Note:** All NTFS, exFAT, and FAT32 USB external drives are automatically detected and listed in Seagate Media Sync. It can take a few seconds for the software to detect your drive. If your drive doesn't appear, make sure it's properly connected and turned on.

Click the drive to display information about how the space on the drive is being used.

Click the **Settings** icon to display options for testing the drive, controlling drive activity lights, power settings, registering the product, and updating the software. You can also choose whether to show Seagate Advisor messages about promotions and Tips and Tricks in your system tray.

Click the **Drive Info** icon to show the serial number of your drive, firmware version, and file system.

## Deleting content from your LaCie Fuel

To delete content from your LaCie Fuel, connect it to a computer using the provided USB 3.0 cable. Open LaCie Fuel and select the content to delete. When you are finished deleting media, make certain to safely eject the LaCie Fuel from your computer (see [Eject the hard drive](#)).

## ACCESSING YOUR VIDEOS, PHOTOS, AND MUSIC

You can access your media library from a mobile device or your computer. For easy access to media files using a mobile device, install the LaCie Media™ app. The app is available in your mobile device's app store.

You can also enjoy your videos, photos, and music from a web browser on a computer or mobile device. Type **www.laciefuel.com** to access your media library.

See the [LaCie Media App user manual](#) for details.

**Note on app availability:** The LaCie Media app supports only Apple, Android, and Windows 8/RT devices.

# UNSUPPORTED MEDIA FILES

The LaCie Media app is the best solution for managing your LaCie Fuel and playing back media files supported by your mobile device. However, certain files are not playable within the app since LaCie Media does not convert or transcode media stored on the device. If your media library includes many files that are not supported by your mobile device, you can:

- Transcode and convert the files on your computer to compatible a format before copying them to the LaCie Fuel. LaCie Media will play the files once they are converted to a media format supported by your mobile device.
- Try a third-party app on your mobile device that is designed to play the media files. When searching for a compatible app in your app store, make certain that it:
  - Supports your file types
  - Supports network and wireless devices

When using a third-party app:

1. Confirm that you are connected to the LaCie Fuel's Wi-Fi.
2. Choose network/wireless devices as the source.
3. Choose the LaCie Fuel as the source playback device.

**Important info:** LaCie takes no responsibility for the use of third-party apps or third-party transcoding applications. Additionally, all questions regarding connection to LaCie and Seagate devices and file conversion using third-party apps should be directed to the third-party app's documentation, website, or manufacturer.

# YOUR LACIE FUEL STORAGE DEVICE

After you have set up your LaCie Fuel, you can change the settings or restore the original factory settings.

## CHARGING THE LACIE FUEL

Your LaCie Fuel's battery is pre-charged from the factory and can run for approximately 45 minutes to 1 hour. You may want to charge the LaCie Fuel before other devices connect to it and access videos, photos, and music. For more information on charging, see [Charging the Battery](#).

## RESTARTING THE LACIE FUEL

If you experience minor problems with your LaCie Fuel, try restarting it. See [LaCie Media App user manual](#) for instructions on how to restart the LaCie Fuel.

When it is fully powered on and broadcasting wirelessly, the LaCie Fuel appears in the list of wireless networks on your device. You must reconnect to your LaCie Fuel device (see [Connecting Your Device](#)).

**Note:** Restarting your LaCie Fuel device does not remove any user settings or delete content from the device.

## POWER OFF THE LACIE FUEL

To turn off your LaCie Fuel, press the Power button on the device, or shut down the device from the LaCie Media app. The LaCie Fuel stops broadcasting wirelessly when it is off.

## RESTORING LACIE FUEL TO ITS ORIGINAL FACTORY SETTINGS

When you restore the LaCie Fuel to its original factory settings, all the files stored on your LaCie Fuel are retained. While your files and folders are kept on the device, all other settings, such as the the device name and password, are removed. A good reason to reset your LaCie Fuel can be forgetting a password. You can restore your device using:

- LaCie Media (see [LaCie Media App user manual](#) for instructions)
- The factory reset button next to the USB 3.0 port on the side of the device. Use the end of a fine point (for example, a paper clip) to press and release this button to reset your LaCie Fuel to its original factory settings.

## CHANGING THE LACIE FUEL'S NAME

The LaCie Fuel device is named **LaCie Fuel xxxx**, where xxxx is the unique identifier for your device. This appears in the wireless network list, also known as the SSID (Service Set Identifier). You can change the name using LaCie Media.

You must reconnect to your LaCie Fuel device after the name has been changed (see [Connecting Your Device](#)).



## SETTING A PASSWORD

You might want to set a password if you're in an environment where you don't want others to connect to your LaCie Fuel. Setting a password turns WPA security on, which protects your wireless transmissions. See the [LaCie Media App user manual](#) for instructions.

## CHANGING THE LACIE MEDIA APP LANGUAGE

The LaCie Media app supports different languages. You can change the language of the app. Changing the language of the app does not affect the language of the media device that you are using. See the [LaCie Media App user manual](#) for instructions.

## DELETING CONTENT FROM YOUR LACIE FUEL

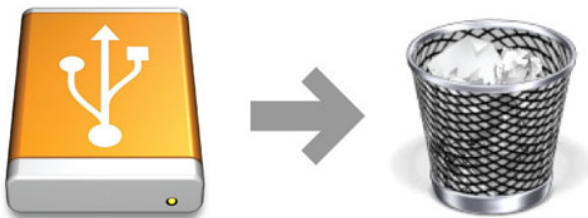
To delete content, connect your LaCie Fuel to your computer using the provided USB 3.0 cable. Open the LaCie Fuel and select the content to delete. When you are finished deleting media, make certain to safely eject the LaCie Fuel from your computer (see [Eject the hard drive](#)).

# EJECT THE HARD DRIVE

USB, FireWire, Thunderbolt, and eSATA external devices feature “plug & play” connectivity, which means that your LaCie storage can be connected and disconnected while the computer is running. To prevent failures, however, it is important to follow these steps when disconnecting your device.

## MAC USERS

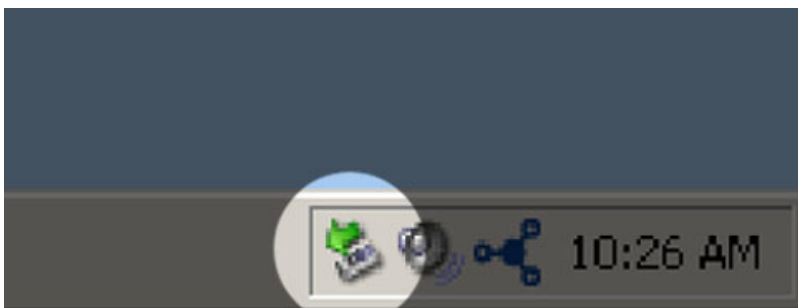
Drag the storage device icon to the Trash. (The icon pictured below is a generic USB device icon. Your LaCie storage may be represented by an icon that looks like the device itself.)



When the icon disappears from the desktop, the storage device can be disconnected.

## WINDOWS XP USERS

From the System Tray (located in the lower right-hand side of your screen), click the Eject icon (a small green arrow over a hardware image). A message will appear, listing the devices the Eject icon controls (it should say, “Safely remove...”). Click on the LaCie storage device in this prompt.



This message will appear: “Safe to Remove Hardware” (or similar). It is now safe to disconnect the device.

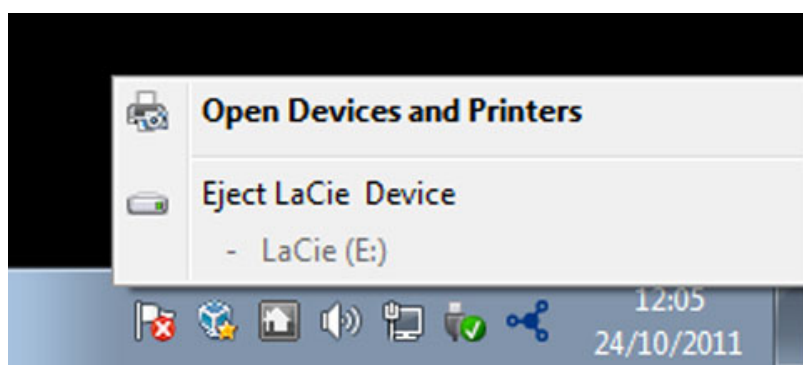
## WINDOWS VISTA, WINDOWS 7, AND WINDOWS 8 USERS

From the System Tray (located in the lower right-hand side of your screen) click on the plug icon (note the white check mark inside a green circle).



A message will appear, detailing the devices that may be safely unmounted.

Select **Eject** for the device you wish to unmount. A message will appear notifying you that it is safe to remove it.



# GETTING HELP

If you are having problems with your LaCie product, consult the table below for a list of available resources.

Order	Source	Description	Location
1	Quick Install Guide	Concise steps to follow for getting your product up and running	Either a printed leaflet or accessory box and included in the product box, or download PDF from the product page
2	Support Pages	Includes interactive troubleshooting topics for most common problems	<a href="http://www.lacie.com/support/">www.lacie.com/support/</a> , select your product, then click the "Troubleshooting" tab
3	User Manual	Includes common troubleshooting topics	See <b>Troubleshooting Topics</b> below
4	Customer Support	Create an account on <a href="http://lacie.com">lacie.com</a> , register your product, and fill out a support ticket	Create an account here: <a href="http://www.lacie.com/us/mystuff/login.htm?logout&amp;rtm=mystuff">www.lacie.com/us/mystuff/login.htm?logout&amp;rtm=mystuff</a>

**Note:** LaCie is dedicated to providing high quality products that enrich the lives of our customers. To help LaCie offer the best customer support, we encourage you to create an account and register your product at [www.lacie.com/us/mystuff/login.htm?logout&rtm=mystuff](http://www.lacie.com/us/mystuff/login.htm?logout&rtm=mystuff). You can give us important feedback as well as receive updated information on your LaCie device.

## TROUBLESHOOTING TOPICS

**Note:** Interactive troubleshooting, a highly effective way to resolve problems with your product, is available from [www.lacie.com/support/](http://www.lacie.com/support/). Select your product, then click the "Troubleshooting" tab.

## Troubleshooting

The LaCie Fuel device is a plug-and-play device. However, in certain situations, the setup process and product usage might require extra attention. Below is a list of troubleshooting solutions for common problems.

### It takes a while for my files to appear in the LaCie Media app or web browser

The LaCie Fuel device performs a one-time scan of any content you copy to the drive. This scanning process may take a little time if you copy a large amount of data.

If you recently copied content to the LaCie Fuel drive and you don't see your files; tap the **Refresh** icon within the LaCie Media app, or press the **Refresh** button to update the page you are viewing from a browser.

### I can't connect wirelessly to the LaCie Fuel

- Make sure the LaCie Fuel is disconnected from your computer, powered on, and that the Wi-Fi LED is a solid blue. **Tip:** The LaCie Fuel device does not broadcast while connected to a computer.
- Make sure to select LaCie Fuel from your device's wireless network list. If you leave the LaCie Fuel's wireless range, your device disconnects from the LaCie Fuel wireless signal.
- Make sure your LaCie Fuel device is fully charged. If the LED is red, charge your device until the LED is green.
- If you know that the LaCie Fuel device is broadcasting, but you can't connect to it, too many devices might be connected to LaCie Fuel. You can connect up to five wireless-enabled devices, or three devices when wirelessly streaming HD video at one time. Try disconnecting one of the devices.
- If you are attempting to stream using a browser, make sure that your device's wireless connection is enabled. Go to any URL to be redirected to the LaCie Fuel main page.
- Click the **Refresh** button on your browser.
- If you receive an error similar to "You are not connected to Wi-Fi. Go to your device's Wi-Fi settings and select **LaCie Fuel** from the list of wireless networks", uninstall the LaCie Media app and reinstall the app on your mobile device.

## Some files play on my LaCie Fuel and others do not

The LaCie Media app is the best solution for managing your LaCie Fuel and playing back media files supported by your mobile device. However, certain files are not playable within the app since LaCie Media does not convert or transcode media stored on the device. If your media library includes many files that are not supported by your mobile device, you can:

- Transcode and convert the files on your computer to compatible a format before copying them to the LaCie Fuel. LaCie Media will play the files once they are converted to a media format supported by your mobile device.
- Try a third-party app on your mobile device that is designed to play the media files. When searching for a compatible app in your app store, make certain that it:
  - Supports your file types
  - Supports network and wireless devices

When using a third-party app:

1. Confirm that you are connected to the LaCie Fuel's Wi-Fi.
2. Choose network/wireless devices as the source.
3. Choose the LaCie Fuel as the source playback device.

**Important info:** LaCie takes no responsibility for the use of third-party apps or third-party transcoding applications. Additionally, all questions regarding connection to LaCie devices and file conversion using third-party apps should be directed to the third-party app's documentation, website, or manufacturer.

## I just copied a video file purchased from iTunes® to the LaCie Fuel, but it won't play

Videos purchased from iTunes are DRM (Digital Rights Management) protected. To play these videos, you must sync your Apple device with your iTunes account for the new files to play from your LaCie Fuel device.

When you choose to play a video purchased from iTunes in the LaCie Media app, you must play the video in a Safari browser.

## I can't connect to LaCie Fuel from my smartphone

Make sure that you have selected LaCie Fuel from your wireless network list. For more information, see [Connecting Your Device](#).

## My computer won't connect to LaCie Fuel

Make sure to enable your wireless settings and select **LaCie Fuel** from your wireless network list. For more information, see [Connecting Your Device](#).

## The LaCie Fuel device shuts down by itself

Your device might just be in standby mode. Your LaCie Fuel includes a power-save feature that puts it in standby mode after 5 minutes of inactivity. It automatically returns to active mode when it is accessed.

## I know the LaCie Fuel is broadcasting, but I can't connect to it

Three or more wireless-enabled devices can stream from the LaCie Fuel device at one time. For more information, see [Connecting Your Device](#).

## The LaCie Fuel device beeps when I plug it in to my computer

Check:

- The battery. It may need to be charged.
- Your computer's USB port. Some USB ports supply a limited amount of power to attached devices. Try another USB port on your computer (if available).

## Copy speeds are very slow from my computer to the LaCie Fuel

There are two reasons why copying content from your computer to the LaCie Fuel is not as fast as you expected:

1. The computer is connected to the LaCie Fuel's Wi-Fi network. Copy speeds via Wi-Fi can be slow, especially if the files are large and you are attempting to copy many files at once. Try connecting the LaCie Fuel to your computer using the provided USB 3.0 cable.
2. Your computer does not have a USB 3.0 port. Faster copy speeds are available with computers that have a USB 3.0 port. The LaCie Fuel can connect to a USB 2.0 port but transfer rates do not reach beyond USB 2.0 speeds.

## Album cover art appears in my photo slideshows

Your LaCie Fuel includes pictures that are larger than 50 KB in its collection of photos, so album cover art larger than this appears in photo slideshows. To prevent album cover art from appearing in slideshows, make sure that album cover art is smaller than 50 KB.

## Content doesn't display when I enter LaCie Fuel in the search field of a browser

LaCie Fuel does not copy content from your mobile device or computer if you type something into the search field of a web browser. Remove your content from the search field, and type any value in the URL address bar and press **Enter**. Your copy process should start.

# LEGAL INFO

## COPYRIGHTS

Copyright © 2015 LaCie. All rights reserved. No part of this publication may be reproduced, stored in a retrieval system, or transmitted in any form or by any means, electronic, mechanical, photocopying, recording or otherwise, without the prior written consent of LaCie.

## CHANGES

The material in this document is for information only and subject to change without notice. While reasonable efforts have been made in the preparation of this document to assure its accuracy, LaCie assumes no liability resulting from errors or omissions in this document, or from the use of the information contained herein. LaCie reserves the right to make changes or revisions in the product design or the product manual without reservation and without obligation to notify any person of such revisions and changes.

## FEDERAL COMMUNICATION COMMISSION INTERFERENCE STATEMENT

This equipment has been tested and found to comply with the limits for a Class B digital device, pursuant to Part 15 of the FCC Rules. These limits are designed to provide reasonable protection against harmful interference in a residential installation. This equipment generates, uses and can radiate radio frequency energy and, if not installed and used in accordance with the instructions, may cause harmful interference to radio communications. However, there is no guarantee that interference will not occur in a particular installation. If this equipment does cause harmful interference to radio or television reception, which can be determined by turning the equipment off and on, the user is encouraged to try to correct the interference by one of the following measures:

1. Reorient or relocate the receiving antenna.
2. Increase the separation between the equipment and receiver.
3. Connect the equipment into an outlet on a circuit different from that to which the receiver is connected.
4. Consult the dealer or an experienced radio/TV technician for help.

FCC Caution: Any changes or modifications not expressly approved by the party responsible for compliance could void the user's authority to operate this equipment.

This device complies with Part 15 of the FCC Rules. Operation is subject to the following two conditions: (1) This device may not cause harmful interference, and (2) this device must accept any interference received, including interference that may cause undesired operation.

**Important info: FCC Radiation Exposure Statement:** This equipment complies with FCC radiation exposure limits set forth for an uncontrolled environment. This equipment should be installed and operated with minimum distance 20 cm between the radiator & your body.

This transmitter must not be co-located or operating in conjunction with any other antenna or transmitter. The availability of some specific channels and/or operational frequency bands are country dependent and are



firmware programmed at the factory to match the intended destination. The firmware setting is not accessible by the end user.

## WEEE



This symbol on the product or on its packaging indicates that this product must not be disposed of with your other household waste. Instead, it is your responsibility to dispose of your waste equipment by handing it over to a designed collection point for the recycling of waste electrical and electronic equipment. The separate collection and recycling of your waste equipment at the time of disposal will help to conserve natural resources and ensure that it is recycled in a manner that protects human health and the environment. For more information about where you can drop off your waste equipment for recycling, please contact your local city office, your household waste disposal service, or the shop where you purchased the product.

## TRADEMARKS

Apple, Mac, Time Machine, and Macintosh are registered trademarks of Apple Computer, Inc. Microsoft, Windows XP, Windows Vista, and Windows 7 are registered trademarks of Microsoft Corporation. Other trademarks mentioned in this manual are the property of their respective owners.

## MANUFACTURER'S DECLARATION FOR CE CERTIFICATION



We, LaCie, solemnly declare that, under our sole responsibility, this product is in compliance with the essential requirements and other relevant provisions of the European directives 1999/5/EC (R&TTE), 2004/108/EC (EMC), and 2006/95/EC (Safety). The product fulfills the standards and/or documents

below:

EN301489-1 v1.8.1 (2008 - 04)  
EN301489-17 v2.1.1 (2009 - 05)  
EN300328 v1.7.1 (2006-10)  
EN 55022: 2006 + A1 2007  
EN 61000-3-2: 2006  
EN 61000-3-3: 2008  
EN 55024: 1998+A1: 2001+A2: 2003  
EN61000-4-2: 2008 ED. 2.0  
EN61000-4-3: 2006 + A1: 2007 ED. 3.0  
EN61000-4-4: 2004 ED. 2.0  
EN61000-4-5: 2005 ED. 2.0  
EN61000-4-6: 2008 ED. 3.0  
EN61000-4-8: 2009 ED. 2.0  
EN61000-4-11: 2004 ED. 2.0  
EN60950-1 :2006 + A11: 2009

## CANADA COMPLIANCE STATEMENT

This Class B digital apparatus meets all requirements of the Canadian Interference-Causing Equipment Regulations.

## JAPAN COMPLIANCE STATEMENT

This is a Class B product based on the standard of the Voluntary Control Council for Interference from Information Technology Equipment (VCCI). If this is used near a radio/TV receiver, it may cause radio interference. Install the equipment according to the manual. This statement does not apply to the LaCie CloudBox.

## MANUFACTURER'S DECLARATION FOR CE CERTIFICATION



We, LaCie, solemnly declare that this product conforms to the following European standards: Electromagnetic Compatibility Directive (2004/108/EC); Low-Voltage Directive: 2006/95/EC

# SAFETY GUIDELINES

## POWER SOURCE

**CAUTION:** Use with the provided power supply only.

**Note:** To protect your data, always follow the safe removal procedures for your operating system when disconnecting your product.

## BATTERY SAFETY

This product contains a lithium-ion battery that must be disposed of properly. See this link for information about recycling and proper disposal.

Please follow the battery safety items below:

- Do not dismantle, open or shred secondary cells or batteries.
- Do not expose cells or batteries to heat or fire. Avoid storage in direct sunlight.
- Do not short-circuit a cell or a battery. Do not store cells or batteries haphazardly in a box or drawer where they may short-circuit each other or be short-circuited by, other metal objects.
- Do not use any charger other than that specifically provided for use with the equipment.
- Do not use any cell or battery which is not designed for use with the equipment.
- Do not mix cells of different manufacture, capacity, size or type within a device.
- Seek medical advice immediately if a cell or a battery has been swallowed.
- Do not subject cells or batteries to mechanical shock.
- In the event of a cell leaking, do not allow the liquid to come in contact with the skin or eyes. If contact has been made, wash the affected area with copious amounts of water and seek medical advice.
- Keep cells and batteries out of the reach of children.
- Keep cells and batteries clean and dry.
- Secondary cells and batteries need to be charged before use. Always use the correct charger and refer to the manufacturer's instructions or equipment manual for proper charging instructions.
- Do not leave a battery on prolonged charge when not in use.
- After extended periods of storage, it may be necessary to charge and discharge the cells or batteries several times to obtain maximum performance.
- Secondary cells and batteries give their best performance when they are operated at normal room temperature (20°C+5°C).
- Retain the original product literature for future reference.
- Use only the cell or battery in the application for which it was intended.
- Dispose of properly.

**The LaCie Fuel device is not intended for office use.**

# PRECAUTIONS

**Caution:** It is essential that you use only the power supply that shipped with your product, since it is a shielded-type power cord that meets FCC emission limits as well as to prevent interference to the nearby radio and television reception.

**Caution:** Modifications not authorized by the manufacturer may void the user's authority to operate this device.

**Important info:** Any loss, corruption or destruction of data while using a LaCie drive is the sole responsibility of the user, and under no circumstances will LaCie be held liable for the recovery or restoration of this data. To help prevent the loss of your data, LaCie highly recommends that you keep TWO copies of your data; one copy on your external hard disk, for instance, and a second copy either on your internal hard disk, another external hard disk or some other form of removable storage media. If you would like more information on backup, please refer to our website.

**Important info:** Some enhancements brought to the product during its lifetime may cause discrepancies between the information and screenshots in the manual and the actual user experience.

**Important info:** 1TB (Terabyte) = 1,000GB. 1GB = 1000MB. 1MB = 1,000,000 Bytes. Total accessible capacity varies depending upon operating environment (typically up to 10% less per TB).

## HEALTH AND SAFETY PRECAUTIONS

- Only qualified persons are authorized to carry out maintenance on this device.
- Read this User Manual carefully and follow the correct procedure when setting up the device.
- Do not open the casing or attempt to disassemble or modify it. Never insert any metallic object into the casing to avoid any risk of electrical shock, fire, short-circuiting or dangerous emissions. This LaCie product contains no user-serviceable parts. If it appears to be malfunctioning, have it inspected by a qualified LaCie Technical Support representative.
- Never expose your device to rain, or use it near water, or in damp or wet conditions. Never place objects containing liquids on the product, as they may spill into its openings. Doing so increases the risk of electrical shock, short-circuiting, fire or personal injury.

## GENERAL USE PRECAUTIONS

- Power requirements 100-240 V~, 50-60 Hz, (supply voltage fluctuations not exceeding  $\pm 10\%$  of the nominal and transient over-voltages according to over-voltage category II).
- Do not expose the LaCie product to temperatures outside the range of 5° C to 30° C (41° F to 86° F); or to operational humidity beyond 10-80%, non-condensing, or non-operating humidity beyond 5-90%, non-condensing. Doing so may damage the LaCie product or disfigure its casing. Avoid placing your LaCie product near a source of heat or exposing it to sunlight (even through a window). Inversely, placing your LaCie product in an environment that is too cold may damage the unit.
- Rated cooling for altitudes up to 2000 meters.
- If your product features a power cable, always unplug it from the electrical outlet if there is a risk of lightning or if it will be unused for an extended period of time. Otherwise, there is an increased risk of electrical shock, short-circuiting or fire.
- Use only the power supply shipped with the device (if applicable).
- Do not use the LaCie product near other electrical appliances such as televisions, radios or speakers. Doing so may cause interference which will adversely affect the operation of the other products.
- Do not place the LaCie product near sources of magnetic interference, such as computer displays, televisions or speakers. Magnetic interference can affect the operation and stability of your LaCie product.
- Never use excessive force on your LaCie product. If you detect a problem, consult the troubleshooting section in this manual.
- Protect your LaCie product from excessive exposure to dust during use or storage. Dust can build up inside the device, increasing the risk of damage or malfunction.
- Never use benzene, paint thinners, detergent or other chemical products to clean the outside of the LaCie product. Such products will disfigure and discolor the casing. Instead, use a soft, dry cloth to wipe the device.

## WARRANTY INFORMATION

LaCie offers first-rate service and support through our generous three-tiered warranty policy. Our 1-, 2-, 3-, and 5-year policies include comprehensive, complimentary web-based resources, expert in-house technical support, and worldwide repair and/or replacement coverage. To benefit from this warranty, please contact LaCie Support at [www.lacie.com/us/support](http://www.lacie.com/us/support) where you can find online support and contact information. You may also contact representatives at the original point of purchase who will be able to help guide you.

Standard warranties vary depending on the product. To verify your product's warranty status and to see which standard warranty is included with your product, type in your product's serial number at [www.lacie.com/us/support](http://www.lacie.com/us/support). If no warranty is listed under your product's name, this means that the warranty has expired.

## WARRANTY UPGRADES

If you wish to extend your warranty coverage, you can purchase Silver, Gold, or Platinum Care or Advanced Exchange. For details, see [www.lacie.com/warranties](http://www.lacie.com/warranties).

## LEGAL INFORMATION

A standard LaCie limited warranty is included with all products. Please read the terms and conditions below.

### LaCie Limited Warranty Policy

LaCie ("LaCie") warrants, to the original purchaser, that this equipment shall be free of defects in materials and workmanship for a period of one (1), two (2), three (3), or five (5) years, depending on the model, from LaCie's date of original shipment when the equipment is used normally and is properly serviced when needed. If you discover a defect covered by the warranty set forth above, your sole and exclusive remedy will be for LaCie, in its sole discretion to (i) repair or replace the product at no charge to you; or, if a repaired unit or replacement product is not available, (ii) to refund the current market value of your product. You acknowledge and agree that replacement product, at the sole option of LaCie, may be a new product or a remanufactured product. In order to receive the remedy set forth above, you must return the product during the warranty period and include with each returned product (i) a copy of your original purchase invoice to verify your warranty; (ii) a Return Material Authorization number; (iii) your name, address and telephone number; (iv) a copy of the bill of sale bearing the appropriate LaCie serial numbers as proof of date of original retail purchase; and (v) a description of the problem. The customer must pay all transportation costs for a returned product. The product will need to be returned to LaCie within the country of original retail purchase. This warranty applies only to hardware products; LaCie software, media, and manuals are licensed and warranted pursuant to separate written agreement. This warranty does not apply if the product has been misused or has been damaged by accident, abuse, misuse, or misapplication; if it has been modified without permission of LaCie; or if any LaCie serial number has been removed or defaced. If a customer has purchased a LaCie Advance Care Option (ACO) to go with this equipment, the ACO shall be valid for three (3) years from activation.

EXCEPT FOR THE LIMITED WARRANTY SET FORTH ABOVE, ALL PRODUCTS ARE SOLD "AS IS" AND LACIE EXPRESSLY DISCLAIMS ALL WARRANTIES OF ANY KIND, WHETHER EXPRESS, IMPLIED OR STATUTORY, INCLUDING THE IMPLIED WARRANTIES OF MERCHANTABILITY, NONINFRINGEMENT AND FITNESS FOR A PARTICULAR PURPOSE. WITHOUT FURTHER LIMITING THE GENERALITY OF THE FOREGOING, DOES NOT WARRANT (1) THE PERFORMANCE OR RESULTS OBTAINED FROM USING THIS PRODUCT, (2) THAT THE PRODUCT IS APPROPRIATE FOR THE CUSTOMER'S PURPOSES, (3) THE MANUAL IS ERROR FREE, OR (4) THAT NO DATA WILL BE LOST WHILE USING THE PRODUCT. THE ENTIRE RISK AS TO THE RESULTS AND PERFORMANCE IS ASSUMED BY THE CUSTOMER. THE WARRANTY AND REMEDIES SET FORTH ABOVE ARE EXCLUSIVE AND IN LIEU OF ALL OTHERS, ORAL OR WRITTEN, EXPRESS OR IMPLIED.

## EXCLUSIONS AND LIMITATIONS

This Limited Warranty applies only to hardware products manufactured by or for LaCie that can be identified by the "LaCie" trademark, trade name, or logo affixed to them. The Limited Warranty does not apply to any non-LaCie hardware products or any software, even if packaged or sold with LaCie hardware. Manufacturers, suppliers, or publishers, other than LaCie, may provide their own warranties to the end user purchaser, but LaCie, in so far as permitted by law, provides their products "as is". Software distributed by LaCie with or without the LaCie brand name (including, but not limited to system software) is not covered under this Limited Warranty. Refer to the licensing agreement accompanying the software for details of your rights with respect to its use.

LaCie does not warrant that the operation of the product will be uninterrupted or error-free. LaCie is not responsible for damage arising from failure to follow instructions relating to the product's use. This warranty does not apply: (a) to consumable parts, unless damage has occurred due to a defect in materials or workmanship; (b) to cosmetic damage, including but not limited to scratches, dents and broken plastic on ports; © to damage caused by use with non-LaCie products; (d) to damage caused by accident, abuse, misuse, flood, fire, earthquake or other external causes; (e) to damage caused by operating the product outside the permitted or intended uses described by LaCie; (f) to damage caused by service (including upgrades and expansions) performed by anyone who is not a representative of LaCie or a LaCie Authorized Service Provider; (g) to a product or part that has been modified to alter functionality or capability without the written permission of LaCie; or (h) if any LaCie serial number on the product has been removed or defaced.

No LaCie dealer, agent, or employee is authorized to make any modification, extension, or addition to this warranty.

Any loss, corruption or destruction of data while using a LaCie drive is the sole responsibility of the user, and under no circumstances will LaCie be held liable for the recovery or restoration of this data. To help prevent the loss of your data, LaCie highly recommends that you keep TWO copies of your data; one copy on your external hard disk, for instance, and a second copy either on your internal hard disk, another external hard disk or some other form of removable storage media. LaCie offers a complete line of CD and DVD drives. If you would like more information on backup, please refer to our website.

LACIE IS NOT RESPONSIBLE FOR SPECIAL, INCIDENTAL, OR CONSEQUENTIAL DAMAGES RESULTING FROM ANY BREACH OF WARRANTY, OR UNDER ANY LEGAL THEORY, INCLUDING LOST PROFITS, DOWNTIME, GOODWILL, DAMAGE TO OR REPLACEMENT OF EQUIPMENT AND PROPERTY, AND ANY COSTS OF RECOVERING, REPROGRAMMING, OR REPRODUCING ANY PROGRAM OR DATA STORED IN OR USED WITH LACIE PRODUCTS EVEN IF IT HAS BEEN ADVISED OF THE POSSIBILITY OF SUCH DAMAGES.

Some states do not allow the exclusion or limitation of implied warranties or liability for incidental or consequential damages, so the above limitation or exclusion may not apply to you. This warranty gives you specific legal rights, and you may have other rights, which vary from state to state.

Your opening of your package, your use of the product, or your return of the enclosed Registration Card acknowledges that you have read and agree to the terms of this Agreement. You further agree that it is the complete and exclusive state of the agreement between us and supersedes any proposal or prior agreement, oral or written, and any other communications between us relating to the subject matter of this Agreement.

Read carefully all information related to warranty and precautions of use of your new LaCie product in the user manual.

For products purchased in the United States, you may contact LaCie at 7555 Tech Center Drive, Tigard, Oregon 97223 USA. Email: [sales@lacie.com](mailto:sales@lacie.com). Website: [www.lacie.com](http://www.lacie.com). Customer service: 503-844-4503.

## Service DOA

On rare occasions, a newly purchased LaCie product may be delivered in non-working order. We are working to avoid these issues, but unfortunately, these situations may arise from time to time. Within the 15 calendar days of purchase, should you experience an issue with your new LaCie product, we ask you to return the product to the place where it was originally bought. You will be required to give a proof of purchase.

## Customer Warning

Please be sure to back up your data before returning your drive to LaCie for repair. LaCie cannot under any circumstances guarantee the integrity of data remaining on a returned drive. We make no provisions for data recovery and cannot be held liable for any data loss on drives or media returned to LaCie.

All products returned to LaCie must be securely packaged in their original box and shipped with postage prepaid, except for Products registered under the Advance Care Option.

## NOTE TO AUSTRALIAN CUSTOMERS

Our goods come with guarantees that cannot be excluded under the Australian Consumer Law. You are entitled to a replacement or refund for a major failure and for compensation for any other reasonably foreseeable loss or damage. You are also entitled to have the goods repaired or replaced if the goods fail to be of acceptable quality and the failure does not amount to a major failure.

Contact us:

LaCie Australia, 6/151 Beauchamp Rd, Matraville NSW 2036 AUSTRALIA

Phone: 02 8063 3711

Email: [info.au@lacie.com](mailto:info.au@lacie.com)

For fast technical support, create a support ticket after registering your product at [www.lacie.com/au/register](http://www.lacie.com/au/register).

---

<sup>21</sup> 1. Quantitative usage examples for various applications are for illustrative purposes. Actual quantities will be based on various factors, including file size, file format, features, and application software.

<sup>22</sup> Exact battery life subject to product model, normal usage condition and configurations.